



# Masts / Reactions

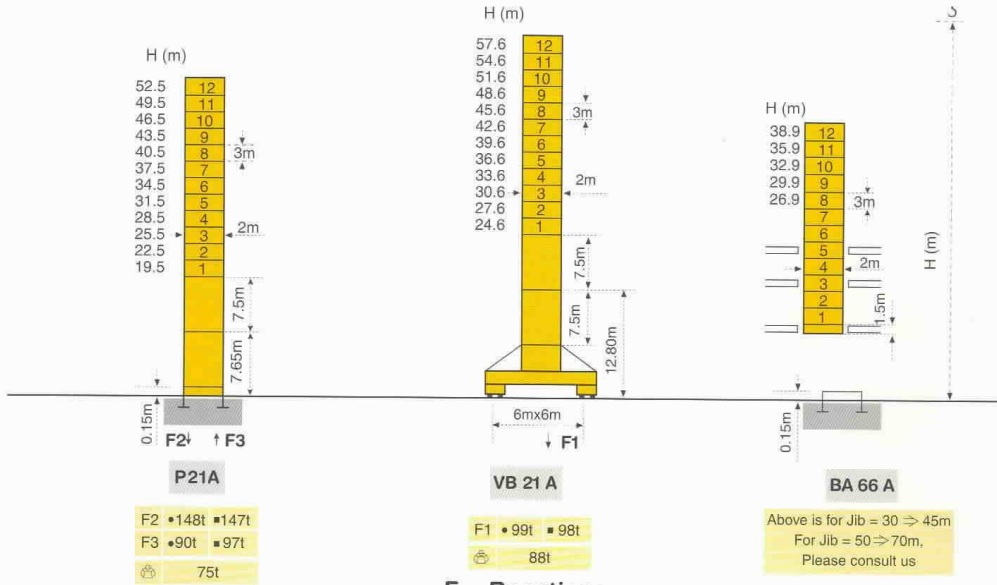
## Masts



2m

## Jib

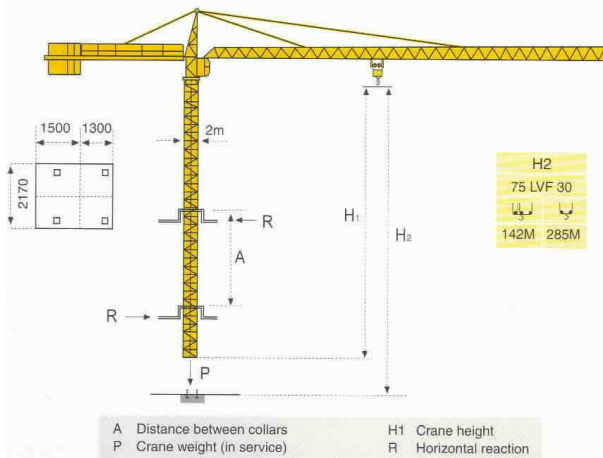
30m ⇒ 70m



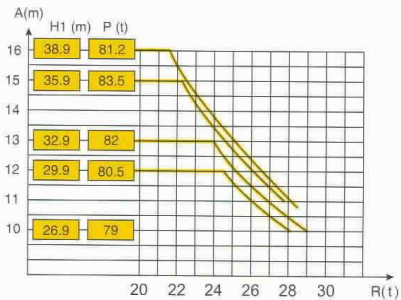
### F = Reactions

- In service
- Out of service
- 🏠 Without load and ballast with longest jib and maximum height

# Climbing crane



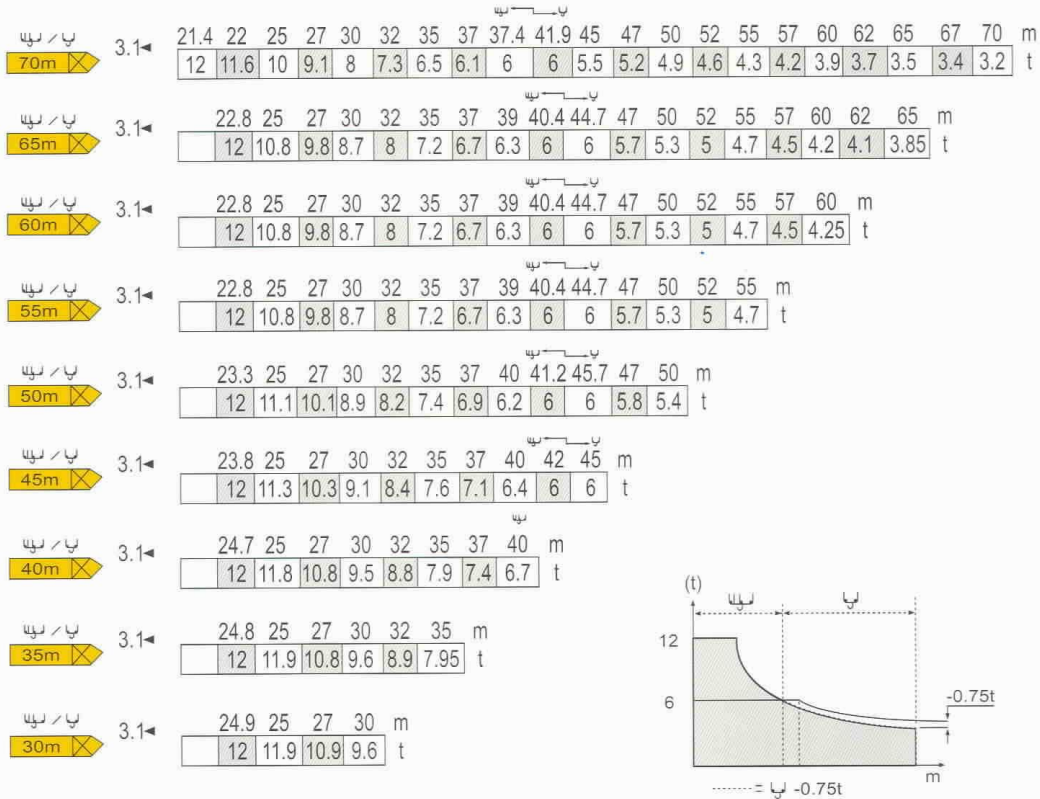
## BA 66 A



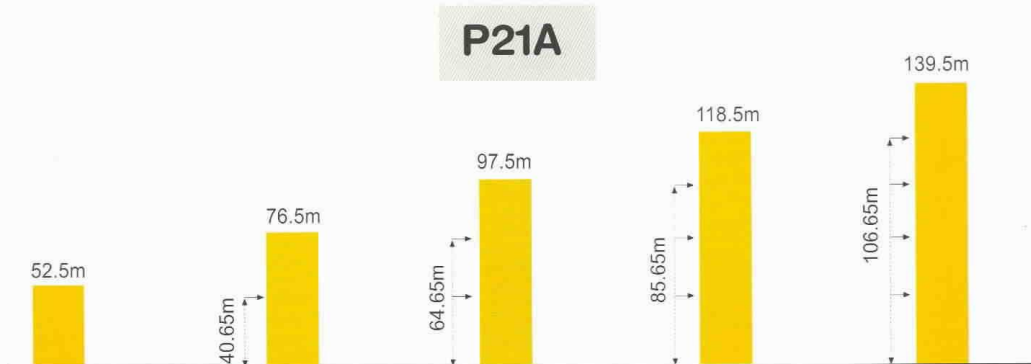
**MC 310 K12**

**POTAIN**









## Load diagrams



## Anchorage



## Mechanisms

		m/min	t	m/min	t	ch-Ps hp	kW	
Hoisting	 75 LVF 30					75	55	570m
		3.6 ↓ 14 ↓ 44 ↓ 56 ↓ 80 ↓ 104	6 6 6 4.5 3 1.5	1.8 ↓ 7 ↓ 22 ↓ 28 ↓ 40 ↓ 52	12 12 12 9 6 3			
Trolleying	 6 D3 V4	15 - 50 m/min (12t)				7.4	5.4	
		100 m/min (6t)						
Slewing	 RVF 162	0 ⇒ 0.7 tr/min (rpm)				2 x 7.5	2 x 5.5	
Travelling	VB 20A VB 21A  R ≥ 13M RT 544 A1 2V	13.5 ⇒ 27 m/min				4 x 7	4 x 5.2	
CEI 38  IEC 38		<b>kVA</b>		Generator set				
400V ( +6% - 10% ) 50Hz		75LVF : 100 kVA		*				

\* Please consult us.

Subject to Modification



**GROVE**  
**POTAIN** 

Manitowoc Crane Group Asia Pte Ltd  
Manitowoc Crane Group

26 Benoi Road  
Singapore 629 898  
Tel: 65-6861 7133  
Fax (Admin/Sales) : 65-6862 4040  
Fax (Service/Parts) : 65-6862 4142  
www.manitowoccrane.com

Copyright. © POTAIN 2003

**MC 310 K12**

Ref: 2003.06

**Manitowoc**  
Crane Group

 Company