

TADANO TRUCK CRANE

MODEL : TL-300E

(CARRIER : KG46SXN)

GENERAL DATA

CRANE CAPACITY 30,000 kg at 3.0 mBOOM 4-section, 10.5 m — 33.0 mDIMENSION

Overall length	approx.	12,650 mm
Overall width	approx.	2,490 mm
Overall height	approx.	3,450 mm

MASS

Gross vehicle mass	approx.	29,200 kg
-front	approx.	10,200 kg
-rear	approx.	19,000 kg

PERFORMANCE

Max. travelling speed	computed	74 km/h
Gradeability (tan θ)	computed	44%

CRANE SPECIFICATIONS

<u>MODEL</u>	TL-300E
<u>CAPACITY</u>	30,000 kg at 3.0 m
<u>BOOM</u>	<p>4-section full length power telescoping boom of box construction with 5-sheaves at boom head. 3rd boom and top boom telescope synchronously by means of a double-acting cylinder, an extension cable and a retraction cable.</p> <p>Hydraulic cylinders fitted with holding valves.</p> <p style="padding-left: 40px;">Fully retracted length.....10.5 m</p> <p style="padding-left: 40px;">Fully extended length.....33.0 m</p> <p style="padding-left: 40px;">Extension speed.....22.5 m in 125 s</p>
<u>JIB</u>	<p>2-staged extension type. Triple offset (5° /25° /45°) type. Stored under base boom section. Single sheave at jib head.</p> <p style="padding-left: 40px;">Length.....8.7 m and 14.5 m</p>
<u>SINGLE TOP (AUXILIARY BOOM SHEAVE)</u>	Single sheave. Mounted to main boom head for single line work.
<u>ELEVATION</u>	<p>By a double-acting hydraulic cylinder, fitted with holding valve.</p> <p style="padding-left: 40px;">Elevation speed.....-3° to +80° in 70 s</p>
<u>HOIST - Main winch</u>	<p>2-speed type with grooved drum driven by hydraulic axial piston motor through planetary winch speed reducer. Power load lowering and hoisting.</p> <p>Equipped with automatic fail-safe brake with free-fall device by foot brake operation and counterbalance valve.</p> <p>Hoist lever is fitted with a high-speed switch.</p> <p>Controlled independently of auxiliary winch.</p> <p style="padding-left: 40px;">Single line pull.....32.8 kN {3,350 kgf}</p> <p style="padding-left: 40px;">Single line speed</p> <p style="padding-left: 80px;">High range.....110 m/min.</p> <p style="padding-left: 120px;">(at the 4th layer)</p> <p style="padding-left: 80px;">Normal range.....59 m/min.</p> <p style="padding-left: 120px;">(at the 4th layer)</p> <p style="padding-left: 40px;">Wire rope.....spin-resistant type</p> <p style="padding-left: 80px;">Diameter × length.....16 mm × 180 m</p>
<u>HOOK BLOCK- 30 ton capacity</u>	4 sheaves, swivel type hook with safety latch.

HOIST-
Auxiliary winch

2-speed type with grooved drum driven by hydraulic axial piston motor through planetary winch speed reducer. Power load lowering and hoisting.

Equipped with automatic fail-safe brake with free-fall device by foot brake operation and counterbalance valve.

Hoist lever is fitted with a high-speed switch.

Controlled independently of main winch.

Single line pull.....33.3 kN {3,400 kgf}

Single line speed

High range.....95 m/min. (at the 2nd layer)

Normal range.....50 m/min. (at the 2nd layer)

Wire rope.....spin-resistant type

Diameter × length.....16 mm × 105 m

HOOK BLOCK-
3.4 ton capacity

Swivel hook with safety latch for single line use.

SWING

Hydraulic axial piston motor driven through planetary swing speed reducer. Continuous 360° full circle swing on ball bearing slew ring. TADANO Twin Swing System enable to select power-controlled or free swing. Swing lever is fitted with a horn switch.

Equipped with hand-operated swing brake.

Swing speed.....2.5 min⁻¹ {rpm}

HYDRAULIC SYSTEM

Pumps.....Quadruple gear pump driven by carrier engine through P.T.O.

Control valves.....Multiple valves actuated by hand levers with integral pressure relief valves.

Circuit.....Equipped with air cooled type oil cooler.

Hydraulic oil tank capacity....

approx. 430 liters

Filters.....Return line filter

CRANE CONTROL

By 5 control levers based on ISO standard layout.

CAB

Steel construction with sliding door access and safety glass windows opening at sides, rear and roof. Cloth covered reclining seat with headrest is height-adjustable and back-and-forth adjustable.

Equipment

Engine start and stop switch

Accelerator lock button

Electric windshield wiper and electric sky-light wiper

SAFETY DEVICES

Boom angle indicator

Pendant type over-winding cutout

Winch automatic fail-safe brake

Winch drum lock

Hook safety latch

Pilot check valves

Holding valves

Counterbalance valves

Hydraulic pressure relief valves

Front jack overload alarm

Spring center system (Control levers)

Winch lever lock

TADANO Automatic
Moment Limiter
(Model:AML-LC)

Main unit in crane cab gives audible and visual warning of approach to overload. Automatically cuts out crane motions before overload. With working range limit function. Working area for each outrigger position is given separately. Eight functions are constantly displayed.

Digital liquid crystal display:

- Boom angle
- Either boom length or potential hook height
- Actual working radius
- Actual hook load
- Permissible load
- Either jib offset angle or jib length

Bar graphical display:

- Either moment as percentage or main hydraulic pressure and accumulator pressure (Display changes by alternation key)
- Boom position indicator

OUTRIGGERS

4 hydraulically operated outriggers. Each outrigger controlled simultaneously or independently from either side of carrier. Equipped with sight level gauges. Floats mounted integrally with the jacks retract to within vehicle width. All cylinders fitted with pilot check valves.

- Extended width
 - Fully.....6,100 mm
 - Middle.....4,000 mm
 - Minimum.....2,080 mm
- Float size (Diameter)...400 mm

FRONT JACK

A fifth hydraulically operated outrigger jack. Mounted to the front frame of carrier to permit 360° lifting capabilities. Hydraulic cylinder fitted with pilot check valve. Float size (Diameter)

.....260 mm

COUNTERWEIGHT

Integral with swing frame.
Mass.....3,400 kg

STANDARD EQUIPMENT

Control pedals for telescoping and auxiliary winch.
Asbestos-free (Winch brake and clutch linings)
3 working lights
Winch drum mirror (Hoist mirror)
External lamp (AML)
Sun visor
Cab floor mat

OPTIONAL EQUIPMENT

Electric fan
Cab heater (Diesel fuel type)
Cab cooler (Refrigerant:R134a)
Cable follower
Winch drum rotation indicator (Visual)

NOTE : Each crane motion speed is based on unladen conditions.

CARRIER SPECIFICATIONS

<u>MANUFACTURER</u>	NISSAN DIESEL MOTOR CO., LTD.
<u>MODEL</u>	KG46SXN.....Right hand steering, 8 × 4
<u>ENGINE</u>	Model.....NISSAN PE6T Type.....4 cycle, 6 cylinder in line, direct injection, water cooled diesel engine with turbocharger. Piston displacement.....11,670 cm ³ Bore × Stroke.....133 mm × 140 mm Max. output (JIS).....202 kW {275 PS} at 2,300 min ⁻¹ {rpm} Max. torque (JIS).....961 N·m {98 kgf·m} at 1,200 min ⁻¹ {rpm}
<u>CLUTCH</u>	Dry single plate, hydraulically operated clutch release mechanism with air assisted booster.
<u>TRANSMISSION</u>	9 forward and 1 reverse speeds, constant-mesh gears.
<u>AXLES</u>	Front.....Reverse-elliot type, I-beam. RearFull floating type.
<u>STEERING</u>	Recirculating ball screw type with linkage power assistance.
<u>SUSPENSION</u>	Front.....Semi-elliptic leaf springs, load sharing type. RearEqualizer beams and torque rods.
<u>BRAKE SYSTEM</u>	Service....Foot operated full air brake on all wheels, dual air line system, internal expanding leading and trailing shoe type. Parking....Mechanically operated by hand brake lever. Internal expanding duo-servo shoe type acting on drum at transmission case rear. Auxiliary...Electro-pneumatic operated exhaust brake. Emergency...Pneumatically controlled spring brake, acting on all rear axles.
<u>ELECTRIC SYSTEM</u>	24 V DC. 2 batteries of 12 V (JIS) 115F51, 96 Ah at 5-hour rate Alternator...24 V - 50 A
<u>FUEL TANK CAPACITY</u>	300 liters
<u>CAB</u>	Steel construction, one sided 2-man type. Driver's seat...Adjustable suspension type.
<u>TIRES</u>	Front.....10.00-20-14PR, Single × 4 Rear10.00-20-14PR, Dual × 4 Spare.....10.00-20-14PR, × 1
<u>TURN RADIUS</u>	Min. turning radius (at center of extreme outer tire)11.0 m

STANDARD EQUIPMENT

Fan clutch : Viscous-type
Intake air heater
Overheating warning buzzer
Cooling water level warning buzzer
Engine over-run alarm
PTO hour meter
Seat belt : 3 point type for driver, 2 point type for assistant
Tilting-telescoping steering wheel
Windshield wiper (with intermittent wiping) and washer
Window glass : Tinted, Infrared and Ultraviolet rays absorption
Tachometer
Low air pressure warning buzzer
AM/FM radio
Car heater (Hot water type) with defroster
Third differential gear lock
Speedometer (with odometer)
Sun visor
Spare tire carrier with lock key
Tool box with lock key
Fuel tank cap with lock key
Back-up light
Back-up alarm
Air filter warning light (Instrument cluster)
Two towing hooks (Front, Eye type and Rear, hook type)
Ashtray
Cigarette lighter
Front fog lamp
Owner's tool set
Cab floor mat

OPTIONAL EQUIPMENT

Car cooler (Refrigerant:R134a)
Tire inflator

RATED LIFTING CAPACITIES

Unit : kg

Outriggers fully extended 6.1 m							
Front jack extended (360°)							
Front jack not extended (over sides and rear)							
A \ B	10.5 m	14.2 m	18.0 m	21.7 m	25.5 m	29.2 m	33.0 m
3.0 m	30,000	20,000	16,000				
3.5 m	25,400	20,000	16,000	12,000			
4.0 m	22,900	20,000	16,000	12,000	11,500		
4.5 m	21,000	20,000	16,000	12,000	11,500		
5.0 m	19,400	18,400	16,000	12,000	11,500	9,000	
5.5 m	17,700	16,800	14,750	12,000	11,500	9,000	7,000
6.0 m	16,200	15,300	13,700	12,000	11,500	9,000	7,000
7.0 m	13,700	12,650	11,950	11,000	10,000	9,000	7,000
8.0 m	11,400	11,000	10,550	10,200	8,900	8,200	7,000
9.0 m		9,000	9,000	9,200	8,050	7,450	6,250
10.0 m		7,300	7,300	7,700	7,300	6,750	5,700
12.0 m		5,050	5,050	5,450	5,700	5,650	4,800
14.0 m			3,600	4,000	4,250	4,400	4,100
16.0 m			2,550	2,950	3,200	3,400	3,450
18.0 m				2,200	2,450	2,650	2,800
20.0 m				1,550	1,850	2,050	2,200
22.0 m					1,350	1,550	1,750
24.0 m						1,200	1,350
26.0 m						850	1,000
28.0 m							700
30.0 m							500

Unit : kg

Outriggers fully extended 6.1 m						
Front jack extended (360°)						
Front jack not extended (over sides and rear)						
E \ D \ C	8.7 m Jib			14.5 m Jib		
	5°	25°	45°	5°	25°	45°
80°	3,000	1,700	1,000	2,000	900	600
77°	3,000	1,700	1,000	2,000	900	600
76°	3,000	1,700	1,000	1,850	900	600
75°	3,000	1,670	960	1,740	870	570
70°	2,200	1,440	860	1,350	800	530
65°	1,750	1,250	800	1,100	720	490
60°	1,400	1,100	750	900	640	460
55°	1,100	950	700	730	560	430
50°	700	650	600	550	450	400
46°	450	450	400	350	300	250
45°	400	400	350	300	250	
42°	250	250				

- A : Boom length
- B : Load radius
- C : Jib length
- D : Jib offset
- E : Boom angle

Unit : kg

Outriggers fully extended 6.1 m (Over front) Outriggers extended to middle 4.0 m (360°)							
A \ B	10.5 m	14.2 m	18.0 m	21.7 m	25.5 m	29.2 m	33.0 m
3.0 m	27,000	20,000	16,000				
3.5 m	23,000	20,000	16,000	12,000			
4.0 m	19,500	20,000	16,000	12,000	11,500		
4.5 m	16,600	17,100	16,000	12,000	11,500		
5.0 m	14,250	14,200	13,800	12,000	11,500	9,000	
5.5 m	11,900	11,800	11,600	12,000	11,500	9,000	7,000
6.0 m	10,100	10,000	9,900	10,300	10,300	9,000	7,000
6.5 m	8,650	8,600	8,450	8,950	9,200	9,000	7,000
7.0 m	7,400	7,300	7,150	7,700	8,050	8,100	7,000
7.5 m	6,350	6,250	6,150	6,650	7,000	7,200	7,000
8.0 m	5,500	5,400	5,300	5,800	6,100	6,300	6,400
9.0 m		4,100	4,000	4,450	4,700	4,900	5,050
10.0 m		3,200	3,050	3,500	3,750	3,950	4,050
12.0 m		1,850	1,750	2,150	2,400	2,600	2,700
14.0 m			900	1,300	1,550	1,750	1,850
15.0 m				1,000	1,200	1,400	1,500
16.0 m					900	1,100	1,250
17.0 m						900	1,000
18.0 m							750

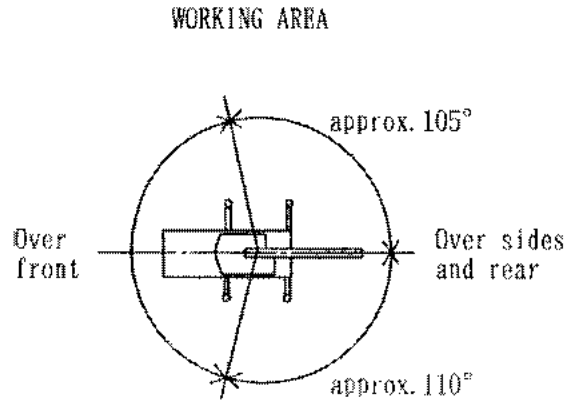
Unit : kg

Outriggers fully extended 6.1 m (Over front) Outriggers extended to middle 4.0 m (360°)						
E \ C	8.7 m Jib			14.5 m Jib		
	D 5°	25°	45°	5°	25°	45°
80°	3,000	1,700	1,000	2,000	900	600
77°	3,000	1,700	1,000	2,000	900	600
76°	3,000	1,700	1,000	1,850	900	600
75°	2,650	1,670	960	1,740	870	570
70°	1,450	1,150	860	1,100	800	530
66°	800	650	600	600	450	350
65°	650	550	500	500		

- A : Boom length
- B : Load radius
- C : Jib length
- D : Jib offset
- E : Boom angle

Unit : kg

Outriggers extended to minimum 2.08 m (360°)	
A	10.5 m
B	
3.0 m	7,000
3.5 m	5,300
4.0 m	4,200
4.5 m	3,500
5.0 m	2,900
5.5 m	2,400
6.0 m	2,000
6.5 m	1,700
7.0 m	1,400
7.5 m	1,200
8.0 m	1,000



A : Boom length
B : Load radius

NOTES

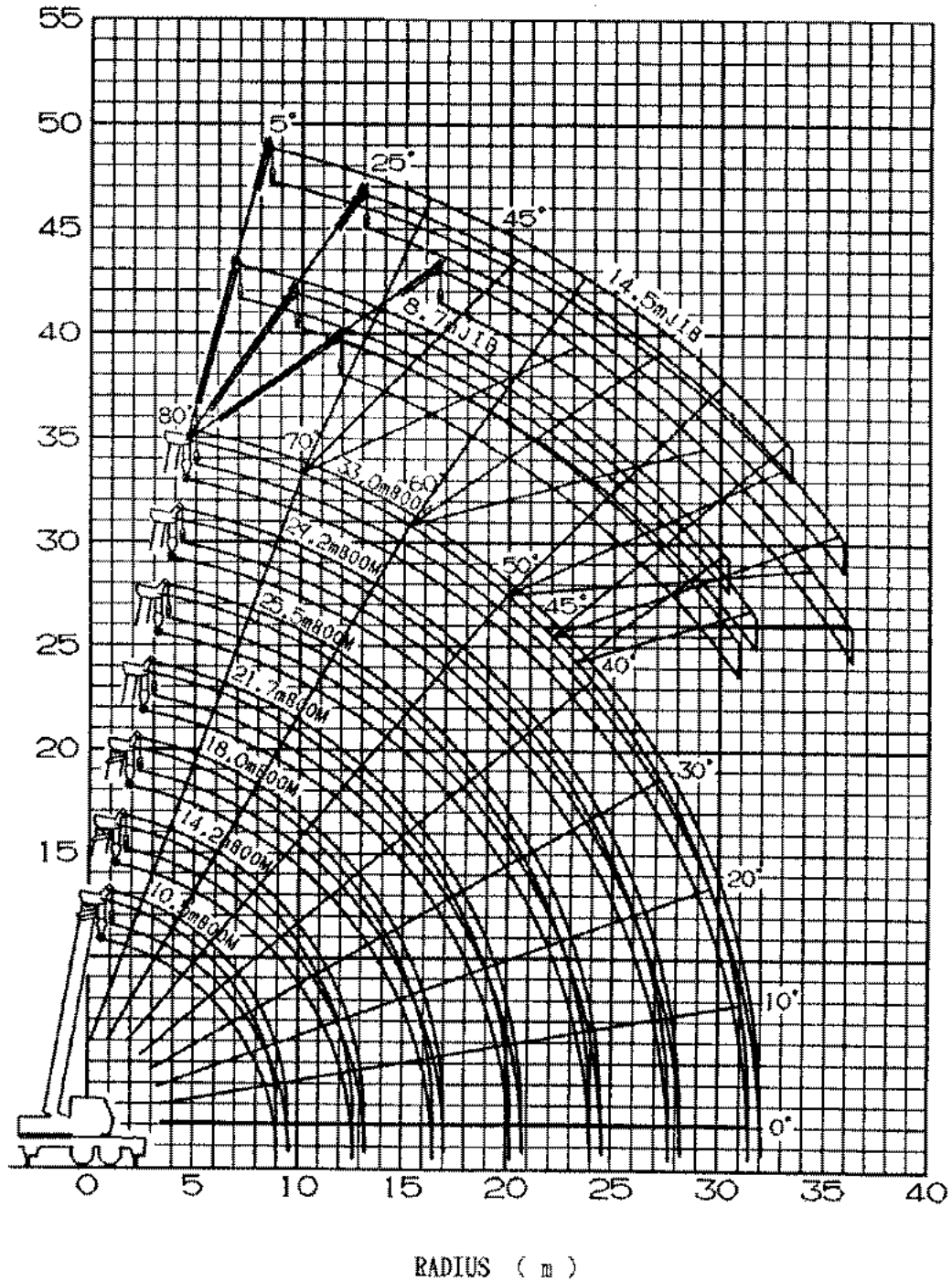
- Rated lifting capacities shown in the table are based on condition that crane is set on firm ground horizontally. Those above bold lines are based on crane strength and those below, on its stability.
- Rated lifting capacities below bold lines do not exceed 75 % of tipping load.
- Each rated lifting capacity includes mass of the hook (280 kg for 30 t capacity, 70 kg for 3.4 t capacity), and slings.
- Without front jack extended, when the boom is within the Over-front, rated lifting capacities are different from those for the boom in the Over-side and Over-rear.
- Standard number of part line for each boom length is as shown below. Load per line should not surpass 32.8 kN {3,350 kgf} for main winch and 33.3 kN {3,400 kgf} for auxiliary winch.

Boom length (m)	10.5 m	14.2 m	18.0 m	21.7 m	25.5 m	29.2 m	33.0 m
No. of part line	9	7	6	4	4	4	4

Jib/Single top
1

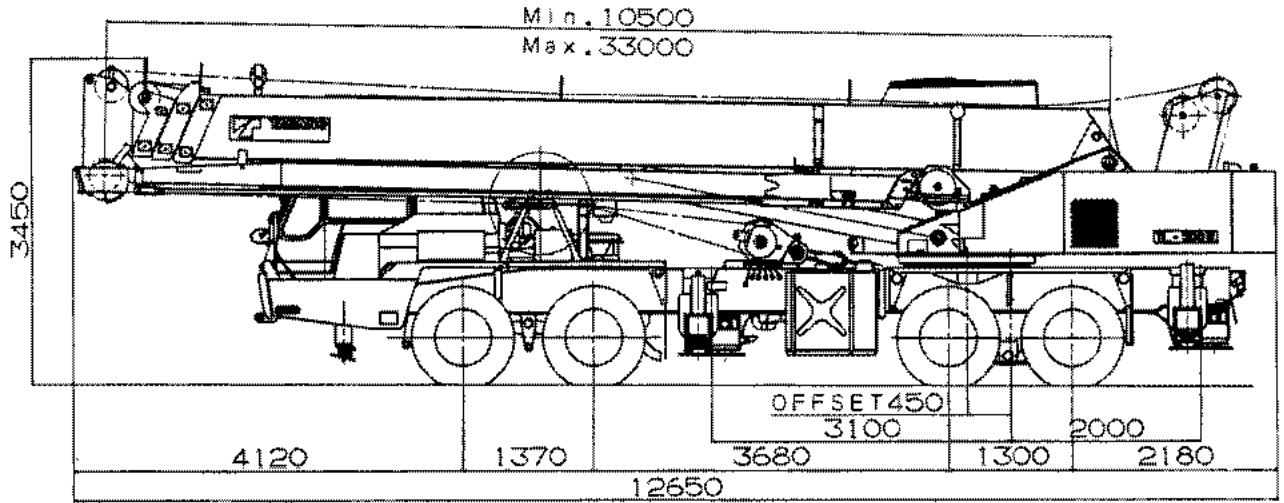
- For rated lifting capacity of single top, reduce the main hook mass from the relevant boom rated lifting capacity. Rated lifting capacity of single top should not exceed 3,400 kg.
- Free-fall operation should be performed without any load on the hook.

WORKING RANGE



NOTE: The above lifting heights and boom angles are based on a straight (unladen) boom, and allowance should be made for boom deflection obtained under laden conditions.

DIMENSIONS



- Overall width----- 2,490 mm
- Tail swing radius----- 3,350 mm
- Tread (track) -Front--- 2,050 mm
- Rear---- 1,860 mm