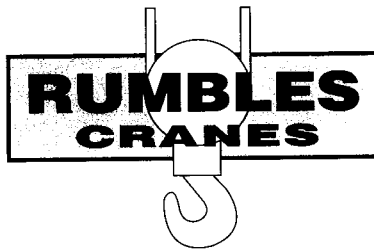


KATO NK-250-V2
25 Tonne Hydraulic crane
 (chart 1)

BS 1757 : 1986
 Din 15019-2
 75% of loads tipping

Outriggers fully extended with front jack - 360 Degree radius							
Outriggers fully extended without front jack - Over side and over rear							
Working Radius (m)	10.5m Boom	14.2m Boom	18.0m Boom	21.7m Boom	25.5m Boom	29.2m Boom	33.0m Boom
3.00	25.00	20.00	16.00				
3.50	25.00	20.00	16.00	12.00			
4.00	22.90	20.00	16.00	12.00	11.50		
4.50	21.00	20.00	16.00	12.00	11.50		
5.00	19.40	18.40	16.00	12.00	11.50	9.00	
6.00	16.20	15.30	13.70	12.00	11.50	9.00	7.00
7.00	13.70	12.65	11.95	11.00	10.00	9.00	7.00
8.00	11.50	10.65	10.55	10.20	8.90	8.20	7.00
8.80	9.50	9.30	9.20	9.40	8.25	7.60	6.40
9.00		9.05	8.80	9.20	8.05	7.45	6.25
10.00		7.40	7.20	7.70	7.30	6.75	5.70
12.00		5.15	5.00	5.45	5.75	5.65	4.80
12.50		4.70	4.60	5.00	5.30	5.45	4.55
13.00			4.25	4.65	4.90	5.05	4.45
14.00			3.60	4.00	4.25	4.45	4.10
16.00			2.55	3.00	3.25	3.40	3.50
16.30			2.40	2.85	3.10	3.25	3.40
18.00				2.20	2.50	2.70	2.80
20.00				1.55	1.85	2.05	2.20
22.00					1.35	1.55	1.70
23.80					0.95	1.20	1.35
26.00						0.80	0.95
27.50						0.60	0.75
29.00							0.55
30.00							0.45
Std Hook	for 25 tonne						
Hook Weight	280 kg						
Parts of line	8	8	8	4	4	4	4
Critical boom angle						-	-

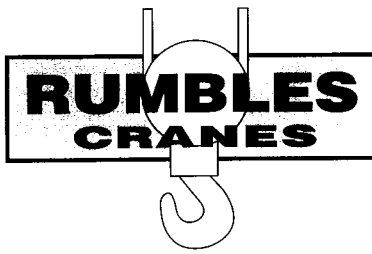


KATO NK-250-V2
25 Tonne Hydraulic crane
 (chart 2)

BS 1757 : 1986
 Based on Din 15019-2
 75% of loads tipping

Outriggers intermediately extended with front jack - 360 Degree radius Outriggers intermediately extended without front jack - Over side and over rear							
Working Radius (m)	10.5m Boom	14.2m Boom	18.0m Boom	21.7m Boom	25.5m Boom	29.2m Boom	33.0m Boom
3.00	25.00	20.00	16.00				
3.50	25.00	20.00	16.00	12.00			
4.00	22.50	20.00	16.00	12.00	11.50		
4.20	19.85	19.40	16.00	12.00	11.50		
4.60	16.75	16.30	16.00	12.00	11.50	9.00	
5.50	12.10	11.80	11.55	12.00	11.50	9.00	
6.00	10.25	10.00	9.75	10.20	10.15	9.00	7.00
6.60	8.55	8.40	8.15	8.60	8.55	9.00	7.00
7.00	7.75	7.55	7.30	7.80	8.05	8.20	7.00
7.70	6.50	6.30	6.10	6.55	6.80	6.95	7.00
8.80	4.90	4.85	4.70	5.10	5.35	5.50	5.60
9.00		4.60	4.45	4.90	5.15	5.30	5.40
10.00		3.60	3.45	3.90	4.20	4.30	4.45
12.00		2.10	1.95	2.45	2.75	2.95	3.10
12.50		1.85	1.65	2.20	2.45	2.70	2.85
13.00			1.40	1.95	2.20	2.45	2.60
14.00			0.95	1.45	1.75	2.00	2.15
15.00			0.60	1.05	1.35	1.60	1.75
16.00				0.75	1.00	1.25	1.45
17.00				0.45	0.75	0.95	1.15
18.00					0.50	0.70	0.90
19.00						0.50	0.65
20.00							0.45
Std Hook	for 25 tonne						
Hook Weight	280 kg						
Parts of line	8	8	8	4	4	4	4
Critical boom angle	-	-	15	27	38	44	47

Outriggers minimum extension with front jack - over side and rear							
Working Radius (m)	10.5m Boom	14.2m Boom	18.0m Boom	21.7m Boom	25.5m Boom	29.2m Boom	33.0m Boom
3.00	10.00	9.90	7.50				
3.50	7.95	7.75	7.50	6.40			
4.00	6.50	6.25	6.10	6.40	5.50		
4.50	5.45	5.15	5.00	5.30	5.50		
5.00	4.60	4.30	4.20	4.50	4.70	4.10	
5.50	3.90	3.60	3.50	3.85	4.00	4.10	3.70
6.00	3.30	3.05	2.95	3.30	3.50	3.55	3.70
7.00	2.45	2.20	2.10	2.45	2.60	2.70	2.85
8.00	1.80	1.60	1.45	1.80	2.00	2.10	2.20
9.00		1.10	0.90	1.35	1.50	1.60	1.75
10.00				0.85	1.10	1.25	1.35
11.00						0.90	1.05
Parts of line	8	8	8	4	4	4	4
Critical boom angle	-	40	52	56	62	63	66

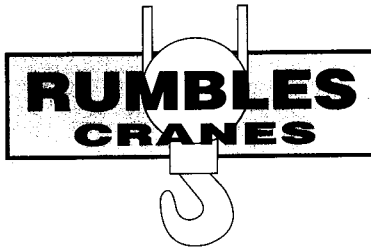


KATO NK-250-V2
25 Tonne Hydraulic crane
 (chart 3)

BS 1757 : 1986
 Din 15019-2
 75% of loads tipping

Outriggers fully extended with front jack - 360 Degree radius						
Outriggers fully extended without front jack - Over side and over rear						
33m Boom + 8.7m jib						
Boom Angle Degrees	Offset 5 degrees		Offset 17 degrees		Offset 30 degrees	
	Working Radius (m)	Load (tonne)	Working Radius (m)	Load (tonne)	Working Radius (m)	Load (tonne)
80.0	8.00	3.00	9.60	2.20	11.30	1.60
76.5	11.00	3.00	12.50	2.20	14.00	1.60
74.0	12.90	2.64	14.30	2.02	15.80	1.52
70.0	15.50	2.23	16.90	1.76	18.30	1.43
66.0	18.10	1.91	19.50	1.54	20.70	1.29
62.0	20.60	1.67	22.00	1.37	23.00	1.17
58.5	22.80	1.48	24.20	1.23	25.30	1.05
56.5	23.90	1.28	25.20	1.18	26.20	1.02
55.5	24.50	1.16	25.70	1.08	26.80	0.98
50.0	27.30	0.70	28.40	0.65	29.30	0.60
46.0	29.30	0.44	30.30	0.39	31.10	0.36
44.0	30.20	0.32	31.20	0.28	31.80	0.28
Std Hook	for 3.4 tonne					
Hook Weight	60 kg					
Parts of line	1 part					
Critical boom angle	41 Degrees					

33m Boom + 14.5m jib						
Boom Angle Degrees	Offset 5 degrees		Offset 17 degrees		Offset 30 degrees	
	Working Radius (m)	Load (tonne)	Working Radius (m)	Load (tonne)	Working Radius (m)	Load (tonne)
80.0	9.90	2.00	12.50	1.30	15.10	0.90
78.2	12.00	2.00	14.50	1.30	17.20	0.90
77.0	13.10	1.84	15.50	1.25	18.00	0.90
72.0	17.00	1.41	19.30	1.04	21.60	0.83
68.0	19.90	1.17	22.20	0.90	24.30	0.73
64.0	22.80	1.01	25.00	0.78	26.90	0.66
60.0	25.40	0.90	27.70	0.69	29.40	0.59
56.0	28.10	0.76	30.40	0.63	31.70	0.55
52.5	30.50	0.66	32.40	0.57	33.70	0.52
51.5	31.10	0.58	32.90	0.55	34.20	0.51
47.0	33.60	0.33	35.10	0.31	36.30	0.29
Std Hook	for 3.4 tonne					
Hook Weight	60 kg					
Parts of line	1 part					
Critical boom angle	44 Degrees					

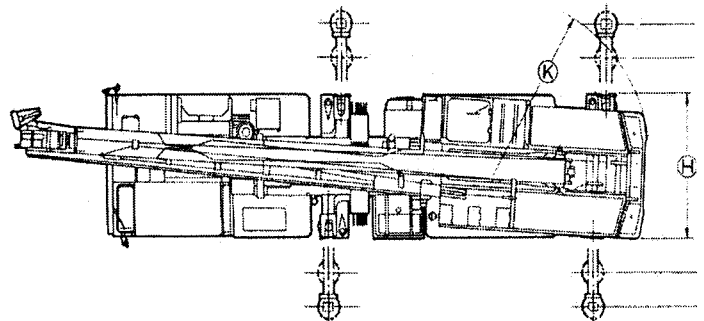
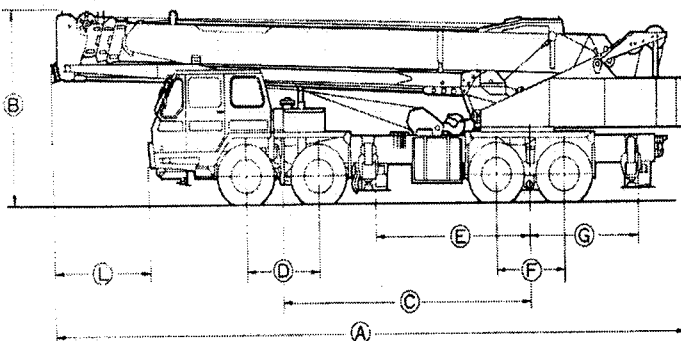


KATO NK-250-V2
25 Tonne Hydraulic crane
 (chart 4)

BS 1757 : 1986
 Din 15019-2
 75% of loads tipping

Outriggers Intermediately extended with front jack - 360 Degree radius						
Outriggers intermediately extended without front jack - Over side and over rear						
33m Boom + 8.7m jib						
Boom Angle Degrees	Offset 5 degrees		Offset 17 degrees		Offset 30 degrees	
	Working Radius (m)	Load (tonne)	Working Radius (m)	Load (tonne)	Working Radius (m)	Load (tonne)
80.0	8.00	3.00	9.60	2.20	11.30	1.60
76.5	11.00	3.00	12.50	2.20	14.00	1.60
73.5	13.40	2.58	14.70	1.97	16.20	1.50
72.0	14.00	2.29	15.60	1.86	17.00	1.47
71.0	14.60	2.03	16.20	1.71	17.70	1.46
68.0	16.40	1.39	17.90	1.20	19.30	1.04
65.0	18.30	0.87	19.80	0.72	21.10	1.64
62.0	20.10	0.47	21.40	0.42	22.80	0.33
Std Hook	for 3.4 tonne					
Hook Weight	60 kg					
Parts of line	1 part					
Critical boom angle	59 Degrees					

33m Boom + 14.5m jib						
Boom Angle Degrees	Offset 5 degrees		Offset 17 degrees		Offset 30 degrees	
	Working Radius (m)	Load (tonne)	Working Radius (m)	Load (tonne)	Working Radius (m)	Load (tonne)
80.0	9.90	2.00	12.50	1.30	15.10	0.90
78.2	12.00	2.00	14.50	1.30	17.20	0.90
77.0	13.10	1.84	15.50	1.25	18.00	0.90
73.0	15.40	1.57	17.80	1.12	20.20	0.84
70.5	18.00	1.36	20.40	0.95	22.60	0.78
69.0	18.90	1.14	21.50	0.94	23.60	0.77
66.0	21.00	0.71	23.40	0.58	25.40	0.51
64.0	22.30	0.49	24.60	0.40	26.60	0.34
Std Hook	for 3.4 tonne					
Hook Weight	60 kg					
Parts of line	1 part					
Critical boom angle	61 Degrees					



Office: 32-34 Bedford Street Queanbeyan NSW 2620 • Postal: PO Box 61 Campbell ACT 2612
 Phone: (02) 6299 6100 • Fax: (02) 6299 6101 • Email: info@rumblescranes.com.au